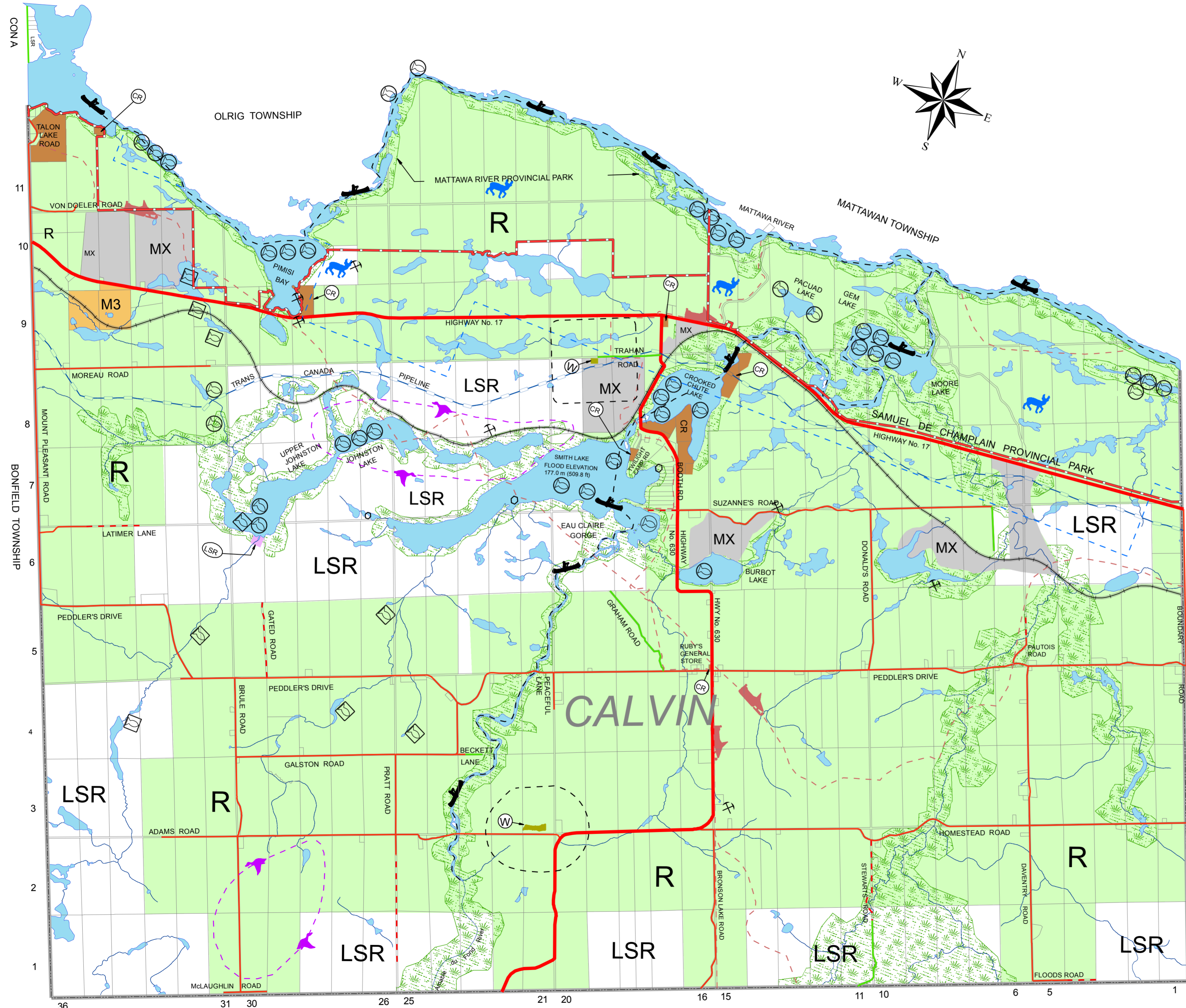
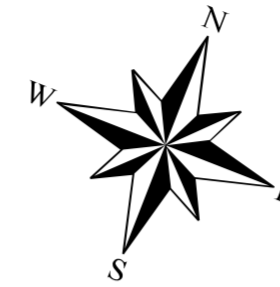


ZONING BY-LAW FOR THE EAST NIPISSING PLANNING AREA TOWNSHIP OF CALVIN

SCHEDULE "A" TO BY-LAW No. 2000-011

October 20, 2009

SCALE
0 1000 3000 metres



LEGEND

NATURAL HERITAGE FEATURES

- WATERFOWL CONCENTRATION AREA
- DEER YARD
- MOOSE WINTERING AREA
- MOOSE AQUATIC FEEDING AREA
- WARM WATER HABITAT
- LARGEMOUTH BASS
- MUSKELLUNGE
- PIKE
- SMALLMOUTH BASS
- WALLEYE
- STURGEON
- COLD WATER HABITAT
- ATLANTIC SALMON
- BROOK TROUT
- LAKE TROUT
- RAINBOW TROUT
- SPLAKE
- BROOK TROUT SPAWNING AREA
- HERONRY
- OSPREY
- LOON

TRANSPORTATION AND INFRASTRUCTURE CORRIDORS

- PROVINCIAL HIGHWAY
- TOWNSHIP ROADS (Yearly Maintained)
- TOWNSHIP ROADS (Seasonally Maintained)
- PRIVATE ROADS
- RESOURCE ACCESS ROADS
- RAIL LINE
- TRANS CANADA PIPELINE
- SNOWMOBILE TRAIL

ZONES

- R RURAL
- LSR LIMITED SERVICES RURAL
- CR COMMERCIAL / RECREATIONAL
- MI GENERAL INDUSTRIAL
- M3 HEAVY INDUSTRIAL
- MX MINERAL AGGREGATE RESOURCE
- WASTE MANAGEMENT FACILITY
- 500m INFLUENCE AREA
- ENVIRONMENTAL PROTECTION

NATURAL AND HUMAN MADE HAZARDS

- MINE HAZARD
- FLOOD ELEVATIONS: SPECIFIC ELEVATIONS SHOWN ON SCHEDULE

OTHER FEATURES

- CANOE TRAIL
- TOWNSHIP BOUNDARY